

# T1.1-P21: The acoustic signature of underground chemical explosions during the Source Physics Experiment

Leiph Preston\* Daniel C. Bowman\* Roger Waxler† Rod Whitaker‡ Kyle R. Jones\* Sarah Albert\* Katherine Aur\*

\*Sandia National Laboratories †National Center for Physical Acoustics ‡Los Alamos National Laboratory



## Introduction

Phase I of the Source Physics Experiment (SPE) consisted of **six non-nuclear chemical explosions in granite**. The experiment was designed to produce a **high quality, multiparameter geophysical data set** to facilitate the development of **physics-based models** of signals from buried explosions. Infrasound characterization emerged as one of the primary goals of the experiment, and an eight element acoustic network was deployed for that purpose.

## Network

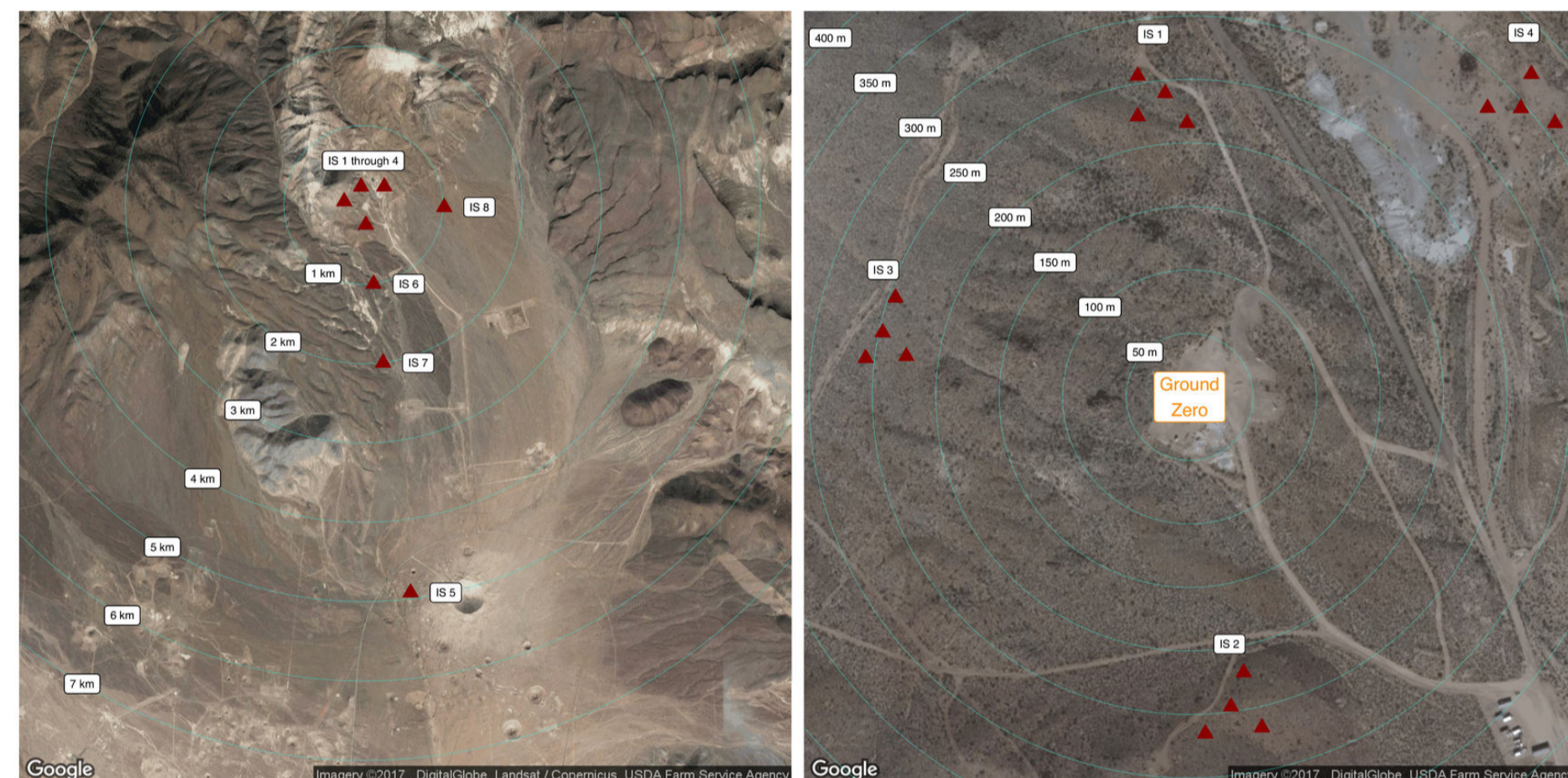


Figure 1: Far view of the eight infrasound stations deployed during the SPE (left) and close up view showing individual array elements (right).

Infrasound sensors were placed 200 m to 5 km from the explosion epicenter. Each station consisted of four sensors approximately 30 m apart. Sensors consisted of Inter-mountain Labs microphones (SPE-1 and SPE-2) replaced with Hyperion microphones (SPE-3 through 6). Wind mitigation consisted of porous hoses and high frequency shrouds. Most microphones at stations IS-1 through IS-4 were replaced with seismically decoupled versions for SPE-5 and SPE-6.

## Acknowledgments

This work was done under award number DE-AC52-06NA25946. Sandia National Laboratories is a multi-mission laboratory managed and operated by National Technology and Engineering Solutions of Sandia, LLC., a wholly owned subsidiary of Honeywell International, Inc., for the U.S. Department of Energy's National Nuclear Security Administration under contract DE-NA0003525. The views expressed here do not necessarily reflect the views of the United States Government, the United States Department of Energy, Los Alamos National Laboratory, or Sandia National Laboratories. Report No. SAND2017-6192 C.

## Wave Forms

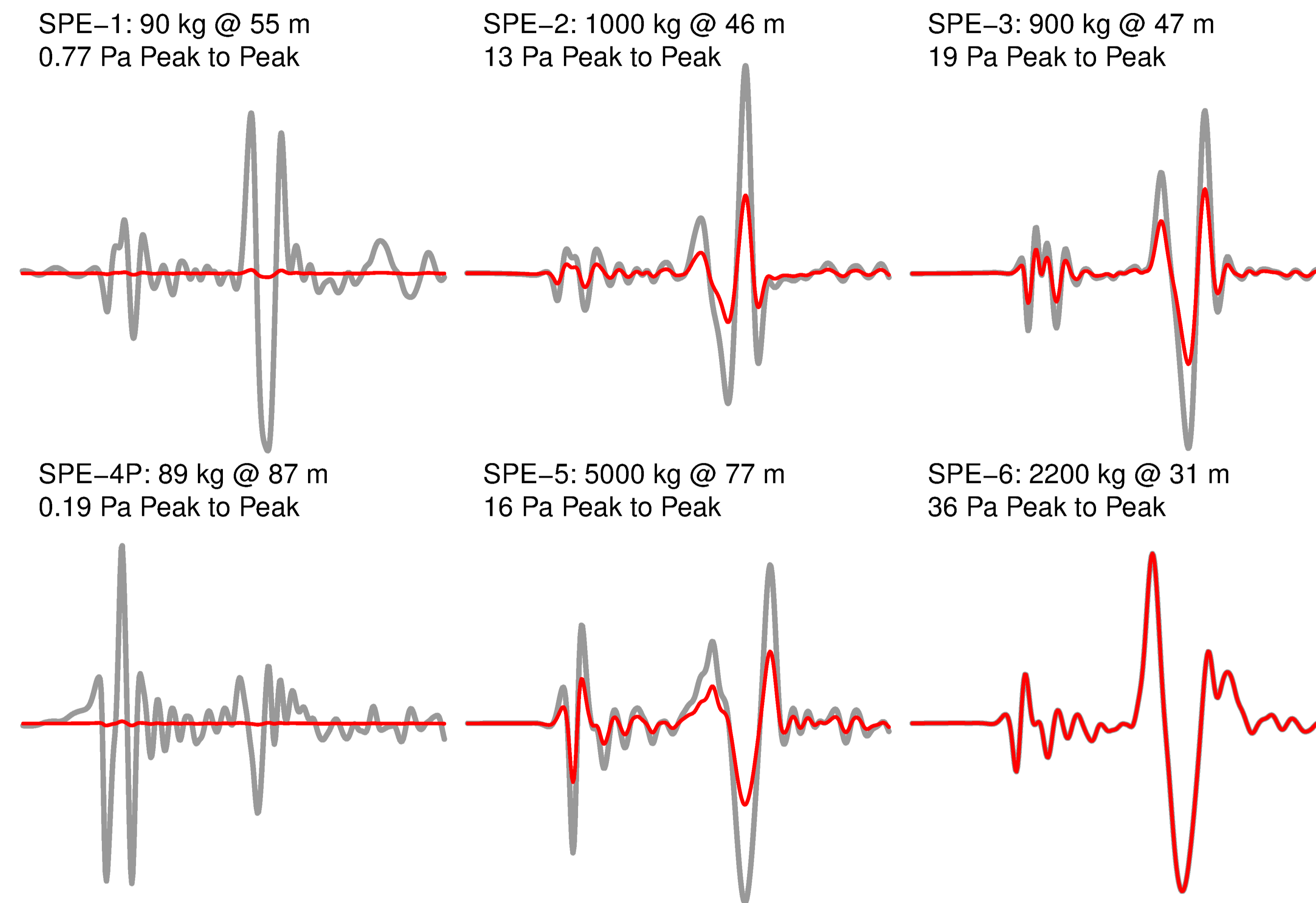


Figure 2: Infrasound recorded at station IS-3, approximately 250 m from the epicenter. The red line is scaled to the maximum amplitude recorded during the series. Shot weights are in TNT equivalent.

## Signal Characteristics

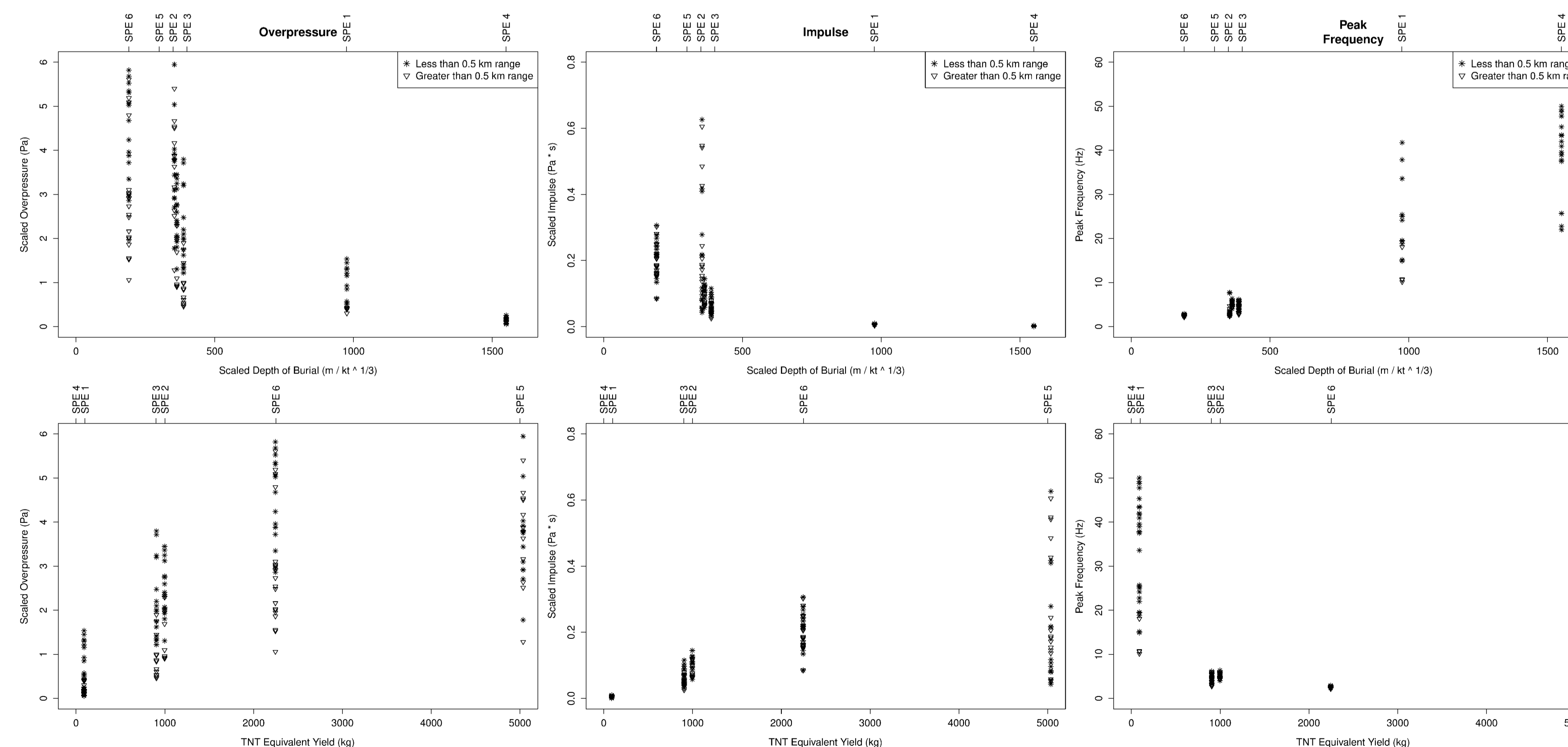


Figure 3: Overpressure, impulse, and peak frequency for each sensor that had an identifiable signal. Overpressure and impulse were scaled to 1 km from the epicenter assuming a geometrical attenuation of  $1/r$ , where  $r$  is distance from source.

## Source Inversion

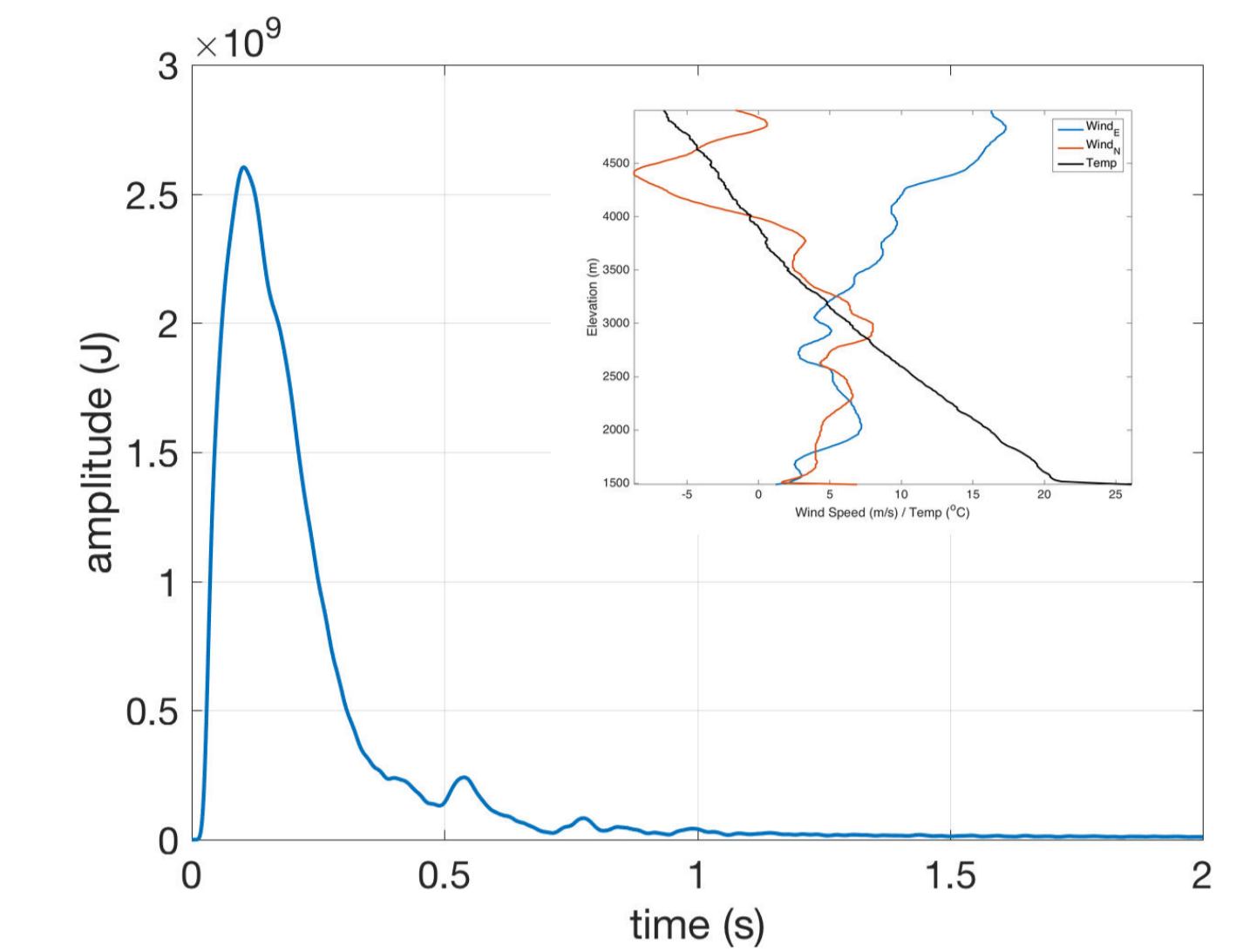


Figure 4: Acoustic source-time function for SPE-1 calculated using frequency-domain inversion of pressure signals and a 3-D synthetic Green's function.

## Rayleigh Integral

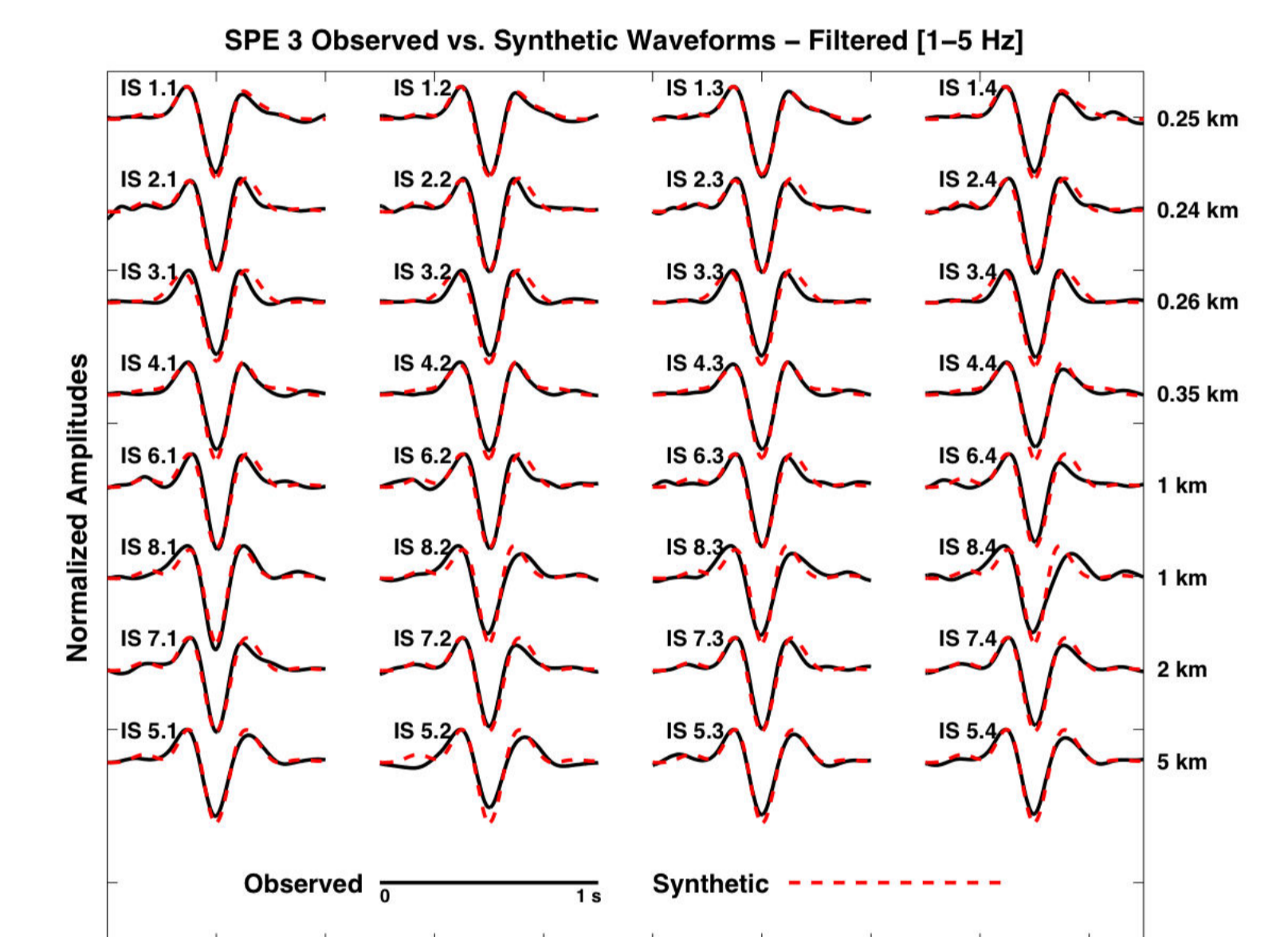


Figure 5: Forward modeling of SPE-3 signals using near-source surface accelerometers and the Rayleigh integral method.

## Boundary Element Model

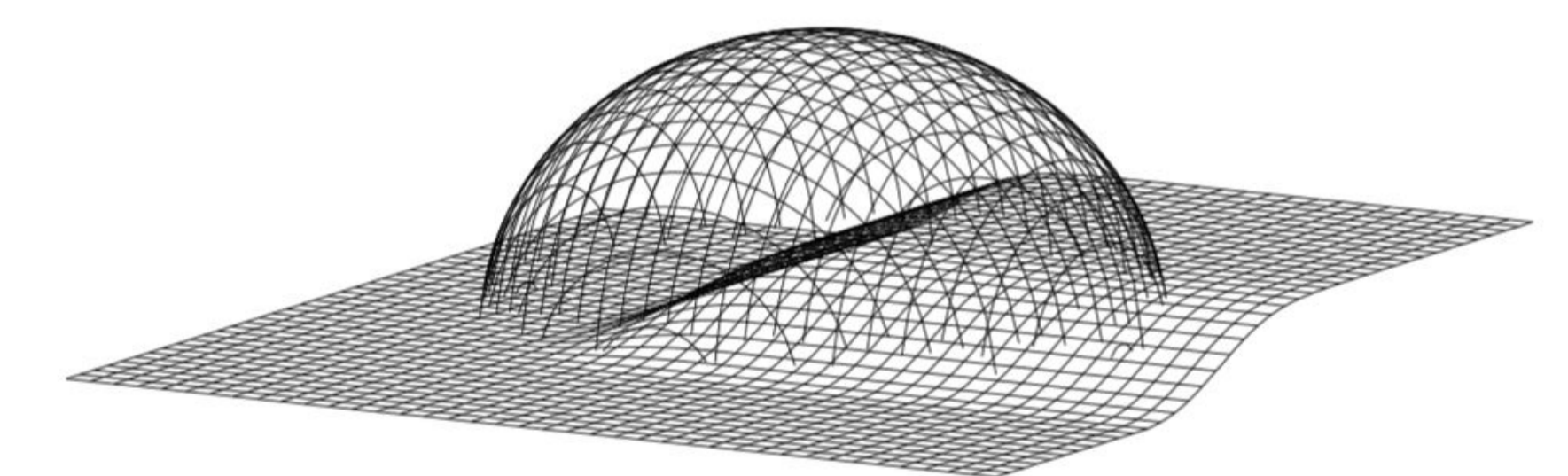


Figure 6: Schematic of the boundary element model for calculating an infrasound source function from a buried explosion.

## Summary

The purpose of this project is to investigate explosive depth, yield, and rock damage effects on acoustic signals. Figures 2 and 3 illustrate the relationship between explosion parameters and infrasound signals. Source inversion (Figure 4) and modeling using near-epicenter ground motions (Figures 5 and 6) elucidate the physical mechanisms behind this relationship.

