

Airborne Gamma-Spectrometry Mapping

Equipment:

Detectors: 4 x 4l NaI (TI)

Resolution: better than 8% for ^{137}Cs

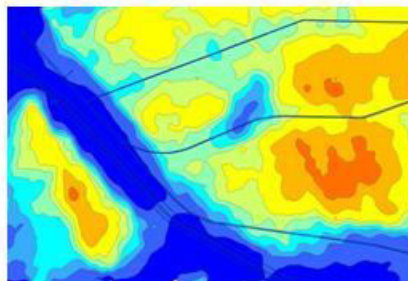
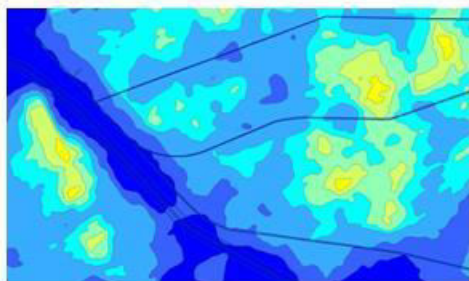
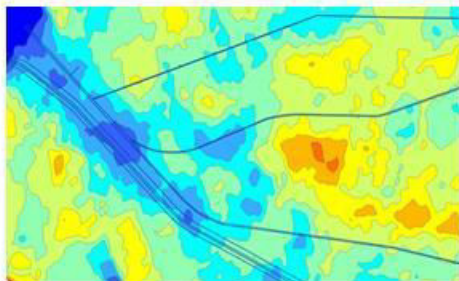
MCA: 1024 channels (1 for each detector)

Sensitivity: 140 cps/(nSv/h) for ^{137}Cs
90 cps/(nSv/h) for ^{60}Co



Result:

K, Th and U concentrations and NORM ground dose rate calculation from a helicopter



We would be happy to work together in all radiation surveys ...

Authors(s):

I. Iliev¹, V. Vasilev¹, M. Mladenova²

¹ Theta-Consult Ltd, Sofia University

CTBTO SnT2017

² Theta-Consult Ltd, Technical University Sofia



... for a more clear environment!